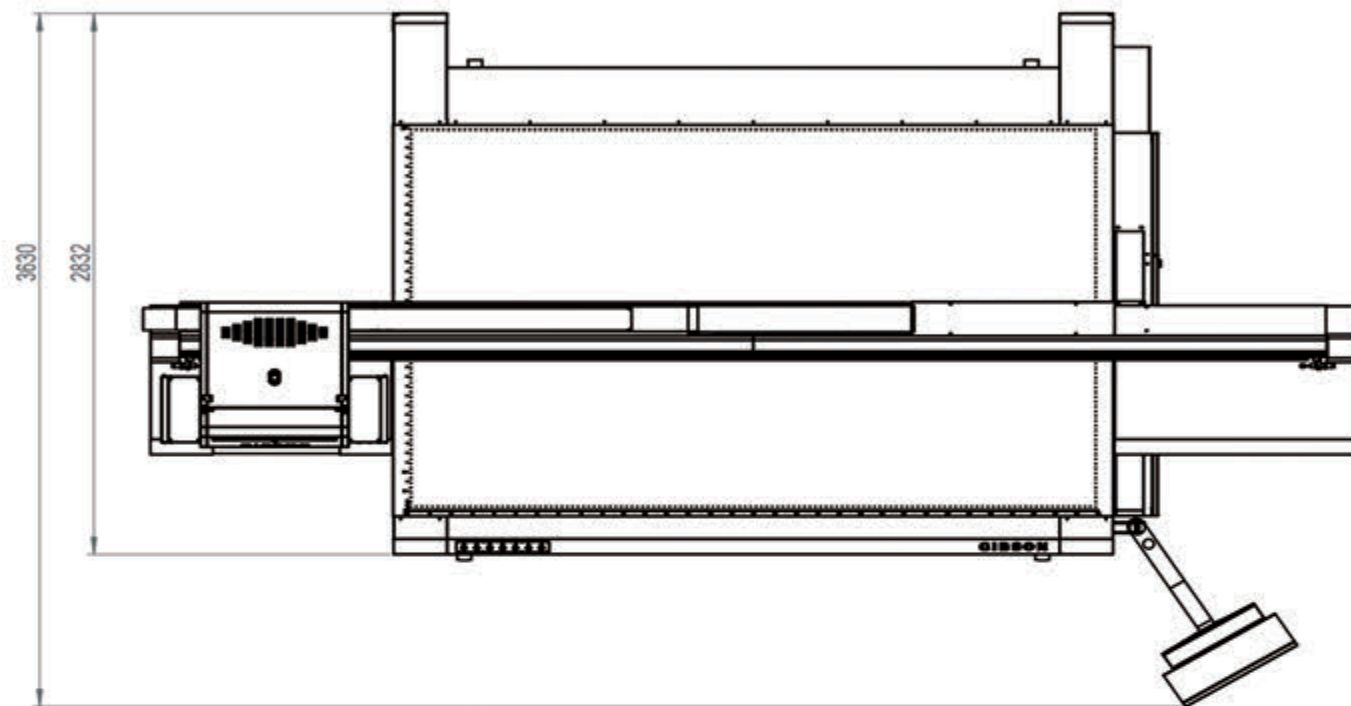


## MACHINE PARAMETERS



## TECHNICAL SPECIFICATION

Model	GIT3220UV	
Head Qty	3—12pcs	
Resolution	Max 720*2400dpi	
Printhead	Ricoh GEN5	Ricoh GEN6
Draft mode	60m <sup>2</sup> /h	76m <sup>2</sup> /h
Production mode	38m <sup>2</sup> /h	49m <sup>2</sup> /h
Quality mode	28m <sup>2</sup> /h	38m <sup>2</sup> /h
Color	K/C/M/Y/LC/LM/W/V Optional	
Printing size	3200*2000mm	
Printing thickness	0-1000mm	
Data interface	USB	
PC	Window 7、Window10	
Printing media	Glass, Ceramic, Metal, PVC board, Hollow sheet, Acrylic, Leather, Wood etc.	
Ink type	Eco-friendly UV-curable ink	
Input format	Adobe Postscript Level 3、PDF、JPEG、TIFF、EPS、AI	
Curing	High-effect UV LED	
Printer weight	1800KG	
Printer size	5600*2780*1600 mm	
Power	6.5kw	
Power requirement	Single phase AC 208-240V±10%、50/60Hz、32A	
Environment	Independent, clean, low dust, less light, good ventilation workshop	
Temperature	18°C ~ 30°C (64°F ~ 86°F)	
Humidity	30% ~ 70% (no condensation)	
Ventilation	It is recommended to use an overhead exhaust fan 600 cfm	

Above specifications are subject to change without prior notice.

>>> Dual-axis linear motor, efficient <<<

GIBSON



>>> Digital Inkjet Printing Solution Supplier-UV Flatbed Series<<<

**GIT 3220 UV** Flatbed Printer

>>> Gibson Image Technology (Guangdong) Co.,Ltd <<<



Add Corso Traiano 168 a  
10127 Torino - Italy  
Tel +39 011 317 24 42  
Web [www.gibsonprinter.it](http://www.gibsonprinter.it)  
Mail [info@gibsonprinter.it](mailto:info@gibsonprinter.it)







## PRINTER DETAILS

### Master level intelligent engine

THK high precision mute guide rail  
1.7m/s linear motor  
Automatic media thickness detector  
High-sensitive intelligent anti-crash system  
Multi-rows(Max 6rows) compatible printhead configuration

### All steel frame support over sized bed

Size at 3200\*2000mm fulfill large range sizes of printing  
Enhanced all steel frame ensure the stability of long-term running  
Non-welding bearing parts and reinforced processing avoid deformation totally

### Ultimate parts combination

Fuji servo motor and grinding lead screw(Taiwan) ensure most accurate stepping  
Adjustable suction system make reasonable friendly operation  
Durable mute suction fan from Taiwan

### PLC control system

The senior team independently developed intelligent vacuum adsorption control and intelligent touch control system, greatly reducing the physical accessories

### Expanded solutions for more applications

High drop accurate jetting for curling materials  
Stable white ink jetting for embossed effects

### Industrial rigid materials output

Operate-friendly mechanical design make materials load and unload easily  
Continuous printing after stop unexpected to save time and cost  
Accurate positioning ensure industrial output

## PRINTING MODE



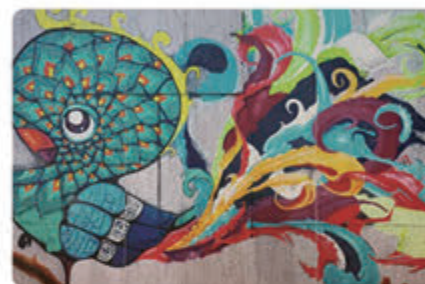
White Upper-layer



Image A-White-Image B



5 layers printing



Embossed printing



White Under-layer



White-color-varnish

## APPLICATIONS



Background wall



Advertising light box



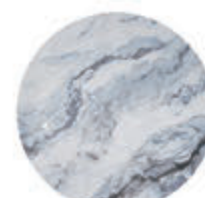
Plate



The floor



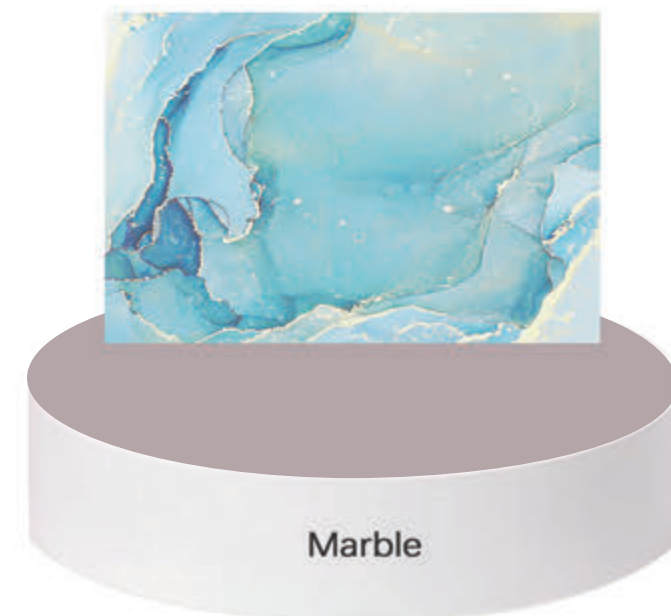
Phone case



Ceramic tile



Glass



Marble